

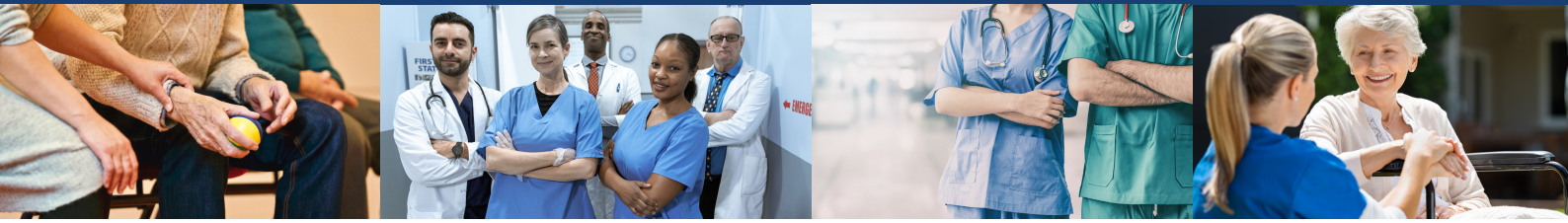


Learning and Development Courses in Health and Social Care Research

April 2022 - March 2023

Courses currently being offered by NIHR Clinical Research Network
North East and North Cumbria Learning and Development





We deliver high quality training to staff throughout the region involved in the delivery of NIHR CRN Portfolio studies.

Our training enables research staff to understand their own roles and responsibilities and delivery studies to the highest ethical and scientific standards. Please use this brochure to browse our courses and access the content or book a place on the courses using NIHR Learn, our online learning platform learn.nihr.ac.uk.

If you have any questions or want to discuss other training needs and opportunities please contact us at nenclearning@nihr.ac.uk.

Contents

Page

Introduction to Good Clinical Practice	3
Good Clinical Practice Refresher	4
Introduction to Informed Consent in Clinical Research	5
Induction - NIHR CRN NENC	6
Communicating in Clinical Research	7
Feasibility - A Guide for Research Teams	8
Principal Investigator (PI) Essentials	9
Open Data Platform (ODP) Webinar	10
Clinical Research Awareness Courses	11
Coaching Skills Workshop	12

Training during 2022/2023

Taking a virtual approach

While it remains necessary to maintain social distancing where possible, we are currently delivering most of our local training virtually using online platforms such as [Zoom](#). We will be reviewing this approach throughout the year with a view to reintroducing classroom-based training, and anticipate being able to offer a choice of both approaches for many of our courses when it is appropriate and safe to do so.

The schedule at the end of this brochure will indicate whether courses are virtual or classroom based, or standalone e-Learning courses.

Getting set up

Our virtual courses are designed to be as engaging and interactive as our classroom ones. To get the most from them we strongly recommend using a PC or laptop with a camera, speakers and microphone, ideally with the free [Zoom client](#) or other platform specific application installed. You can also use a smartphone or tablet equipped with a camera and microphone, though the small screen size may limit your experience. If you are unable to access Zoom please let us know at NENCLearning@nihr.ac.uk to explore alternatives.

Booking a place

All of our courses are free to health and social care staff and can be booked through our online learning platform at learn.nihr.ac.uk.



Introduction to Good Clinical Practice

Good Clinical Practice (GCP) is the international ethical, scientific and practical standard to which all clinical research is conducted.

It is important that everyone involved in research is trained or appropriately experienced to perform the specific tasks they undertake.

NIHR offers range of GCP courses and training aids for the clinical research delivery workforce. Our GCP courses are designed for individuals involved in the delivery of studies at research sites.

Due to the way it is accredited, Introduction to Good Clinical Practice cannot be delivered virtually and an alternative e-Learning course is available at:
<https://learn.nihr.ac.uk/course/view.php?id=721>

Learning outcomes

At the end of the session, participants should be able to:

- Appreciate the importance of clinical research to patients, health professionals, the NHS and wider society
- Recognise that clinical research delivery follows a defined pathway and that GCP Principles apply at each stage of the pathway to protect patients and ensure high quality data
- Demonstrate an understanding of GCP Principles and their application in practice



Good Clinical Practice refresher

The Good Clinical Practice (GCP) refresher course is aimed at research delivery staff that have previously completed the Introduction to Good Clinical Practice training.

The course aims to recap the key principles of GCP and ensure that the research delivery staff are aware of recent and forthcoming changes that may affect their role.

The GCP Refresher course can be delivered virtually.

Learning outcomes

At the end of the session, participants should be able to:

- Refresh and consolidate their previous learning around GCP
- Reflect on their own practice and experience in delivering clinical research
- Share good practice in clinical research, and approaches to improvement
- Explain recent and forthcoming changes in clinical research and the impact these may have



Introduction to Informed Consent in Clinical Research

This course is aimed at all research delivery staff involved in the process of receiving informed consent. It is designed to enable an understanding of the ethical and legislative frameworks underpinning the research consent process, and the principles and responsibilities of consent in clinical research.

The course includes active participation to provide practical experience of asking for and receiving consent.

Learning outcomes

At the end of the session, participants should be able to:

- Explain the ethical and legislative frameworks that underpin the research consent process
- Describe the principles and responsibilities of consent in clinical research
- Follow the research consent '5-step process'
- Gain practical experience in asking for consent for research
- Gain an insight into the added protection required for vulnerable groups



Induction - NIHR CRN NENC

This e-Learning course is aimed at all research active staff undertaking a new role within the North East and North Cumbria region.

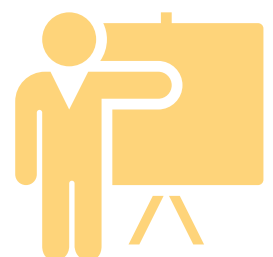
The course is made up of three sections:

1. National Institute for Health Research, our parent organisation
2. NIHR Clinical Research Network North East and North Cumbria
3. A simple checklist to help new starters orientate themselves into the workplace

Learning outcomes

At the end of the course, participants should be able to:

- Explain the purpose and functions of NIHR
- Describe the structure and purpose of CRN North East and North Cumbria, and the role of its internal functions
- Explain what Patient and Public Involvement and Engagement is and why it is important
- Describe a range of learning and development opportunities
- List the orientation activities they have undertaken



Communicating in Clinical Research

Designed to complement the Introduction to Informed Consent in Clinical Research course, this course is aimed at all research delivery staff involved in the process of receiving informed consent. It is designed to build on the knowledge and experience of participants who have some experience of discussing participation in clinical studies with potential research participants.

An interactive workshop approach is used to explain, discuss and demonstrate some communication skills and principles that can be used when approaching potential research participants.

Learning outcomes

At the end of the session, participants should be able to:

- Discuss some key communication principles
- Explain the skills and behaviours required to be effective at discussing clinical research with patients
- Develop a 'patient's perspective' by exploring the experiences of research participants
- Clearly explain randomisation to potential research participants
- Utilise the SPIKES communication model in clinical research



Feasibility - A Guide for Research Teams

This e-Learning course is aimed at research teams and individuals considering participating in and recruiting to a study or trial.

It offers guidance on how to assess the feasibility of the study at your workplace, and explains the factors that should support the successful delivery of the study.

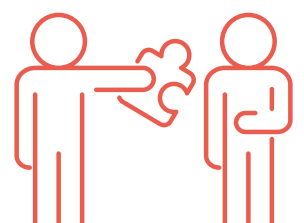
In particular, the course will help you to answer the following questions:

- Is the study suitable for my site and potential participants or patients?
- Is my site suitable for the study?

Learning outcomes

At the end of the course, participants should be able to:

- Explain what feasibility means in the context of clinical research and why it is important
- Explain how to complete an effective Expression of Interest (EOI)
- Discuss the key questions to explore when assessing and establishing feasibility



Principal Investigator (PI) Essentials

A Principal Investigator (PI) is defined by the Health Research Authority as an individual responsible for the conduct of the research (for a particular project, trial or study) at a research site.

The Principal Investigator (PI) Essentials course is designed for all research delivery staff that are new to, or want to know more about, the responsibilities that come with the role of PI.

Learning outcomes

At the end of the session, participants should be able to:

- Explain the PI's responsibilities in leading the conduct of a study at a research site
- Discuss what makes an effective PI and the importance of effective leadership in study identification, set-up, recruitment and conduct
- Demonstrate the skills and behaviours required to be an effective PI
- List sources of help and support available



Open data Platform (ODP) Webinar

The Open Data Platform provides access to recruitment and study data, presenting the NHS research community with trends, monitoring and performance information. This introductory web-based session to the NENC ODP application will enable users to utilise the basic key features including searching for studies and recruitment data.

Virtual sessions can be arranged flexibly to meet the needs of participants. Please contact nencbusinessintelligence@nihr.ac.uk for more information.

Learning outcomes

At the end of the session, participants should be able to:

- Access the ODP platform
- Explain the context and sources of the data held in ODP
- Explain the types of data that are available
- Identify and access a range of key study data
- Interpret ODP data to explain the performance of a study
- Identify performance trends



Raising Awareness of and Embedding Research

This course offers an opportunity to learn about the essentials of health and social care research and provides an insight into how research is designed and undertaken across a range of settings. It will give you the opportunity to explore how health and social care research is embedded in practice as well as some of the career opportunities that are associated with it.

The course is aimed at people working in a health and social care environment that have little or no clinical research knowledge or experience, but who are interested in understanding more and exploring potential careers in this area.

Please contact nenclearning@nihr.ac.uk for further information about these courses and to find out how to book a place.

Learning outcomes

At the end of the course, participants should be able to:

- Explain what clinical research is and why it is important
- List some of the key activities involved in research studies
- Explain the importance of informed consent
- Identify patient safety issues and explain what to do in the event of an adverse event
- Describe a range of jobs and roles involved in clinical research



Coaching Skills Workshop

Recent research and a wide range of publications have highlighted the importance of coaching as an effectively way of supporting the development of staff, particularly during periods of change and transition. Coaching is considered a highly valuable skill for effective management and leadership.

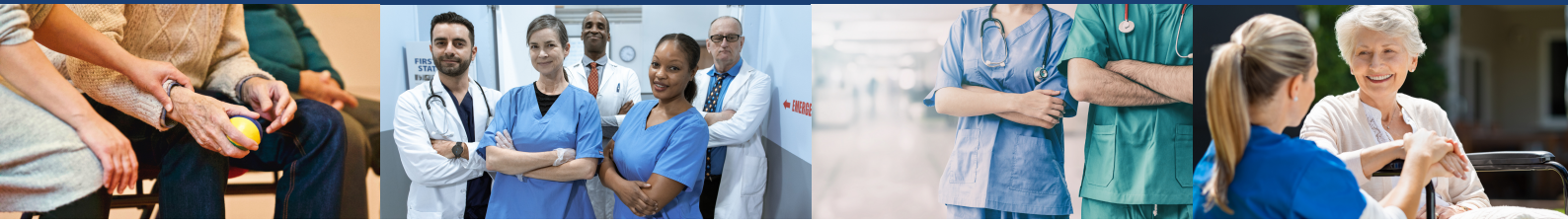
Please contact nenclearning@nihr.ac.uk for further information about this workshop.

Learning outcomes

At the end of the session, participants should be able to:

- Explain the benefits of taking a coaching approach to development
- Be aware of the differences between coaching, counselling and mentoring
- Describe the key characteristics of an effective coach
- Explain and apply a range of tools and models used in coaching
- Hold an effective coaching conversation





Course access and booking

Access to most of our classroom and e-Learning courses is handled through our free online learning platform, NIHR Learn, which is used by over 45,000 learners every year.

On NIHR Learn you can find many learning programmes developed by international leaders from across the clinical research field including our suite of Good Clinical Practice (GCP) courses. You will find courses that are available at a local and national level.

Accessing NIHR Learn

Find out how to create an account and book onto a course by visiting: <https://sites.google.com/a/nih.ac.uk/crn-learn-help/>

Accessing e-Learning and local classroom courses:

- Go to: <https://learn.nih.ac.uk/>
- Select **LCRN Locally Delivered Learning** from the **Your Learning** menu
- Select **CRN North East and North Cumbria** to view a list of local courses
- Enter the course for further details and to book a place

2022/2023 Schedule

Course	Day	Date	Times	Venue
Raising Awareness of and Embedding Research (3 day programme)	Thursday	24 April 7 May 21 May	9am - 1pm	Zoom
GCP Refresher	Tuesday	19 April	9.30am - 1pm	Zoom
Intro to Informed Consent	Thursday	28 April	9.30am - 1pm	Zoom
PI Essentials	Tuesday	10 May	1 - 4.30pm	Zoom
Raising Awareness of and Embedding Research (3 day programme)	Tuesday	24 May 7 June 21 June	9am - 1pm	Zoom
Intro to Informed Consent	Wednesday	8 June	1 - 4.30pm	Zoom
GCP Refresher	Tuesday	12 July	1 - 4.30pm	Zoom
PI Essentials	Thursday	21 July	9.30am - 1pm	Zoom
Introduction to GCP	Wednesday	21 September	9.30am - 4.30pm	Venue TBC
Intro to Informed Consent	Thursday	29 September	9.30am - 1pm	Zoom
GCP Refresher	Thursday	20 October	9.30am - 1pm	Zoom
PI Essentials	Tuesday	15 November	1.30 - 4.30pm	Zoom
Introduction to GCP	Tuesday	29 November	9.30am - 4.30pm	Venue TBC
Intro to Informed Consent	Thursday	1 December	9.30am - 1pm	Zoom
GCP Refresher	Tuesday	13 December	1.30 - 4.30pm	Zoom
PI Essentials	Thursday	2 February	9.30am - 1pm	Zoom
Introduction to GCP	Tuesday	21 February	9.30am - 4.30pm	Venue TBC
GCP Refresher	Thursday	9 March	9.30am - 1pm	Zoom
Intro to Informed Consent	Thursday	30 March	1.30 - 4.30pm	Zoom

Please note all times and venues may be subject to change. Please check NIHR Learn for the most up to date information.



 local.nihr.ac.uk/nenc

 [@NIHRCRN_NENCumb](https://twitter.com/NIHRCRN_NENCumb)

 [nihr-crn-nenc](https://www.linkedin.com/company/nihr-crn-nenc)

#ResearchNENC

